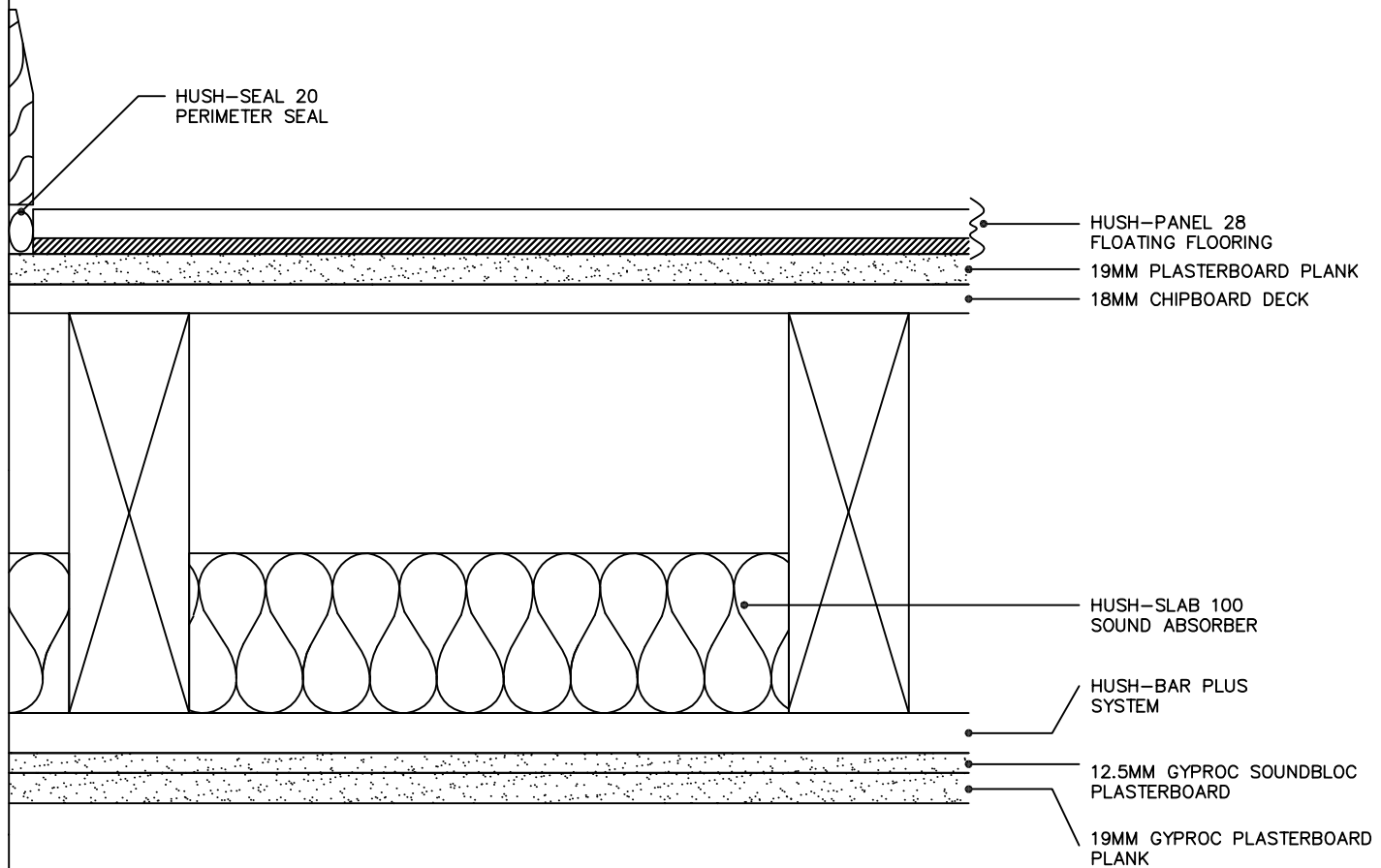


TYPICAL TEST RESULT

IMPACT L<sub>n</sub>TW = 52dB    AIRBORNE D<sub>n</sub>TW = 58dB    D<sub>n</sub>TW + CTR = 53dB  
RESULTS BASED ON 250MM JOISTS AT 450MM CENTRES

HUSH-PANEL 28 LAID OVER 19MM PLASTERBOARD PLANK, LAID OVER 18MM CHIPBOARD DECK, WITH ALL PERIMETERS SEALED USING HUSH-SEAL 20. (FIXED AS PER MANUFACTURERS INSTRUCTIONS).  
HUSH-SLAB 100 FITTED BETWEEN JOISTS, THEN HUSH-BAR PLUS SYSTEM SCREW FIXED TO THE UNDERSIDE OF JOISTS AT 450MM CENTRES ON TO WHICH IS SECURED TWO LAYERS OF HIGH DENSITY PLASTERBOARD, 19MM PLANK AND 12.5MM SOUNDBLOC. SEAL ALL PERIMETERS PRIOR TO SKIMMING. PROVIDES A 1 HOUR FIRE RESISTANCE AT CEILING LEVEL.



HUSH (UK) LTD  
HUSH-SYSTEM 2003 ADV  
TYPE HD1019