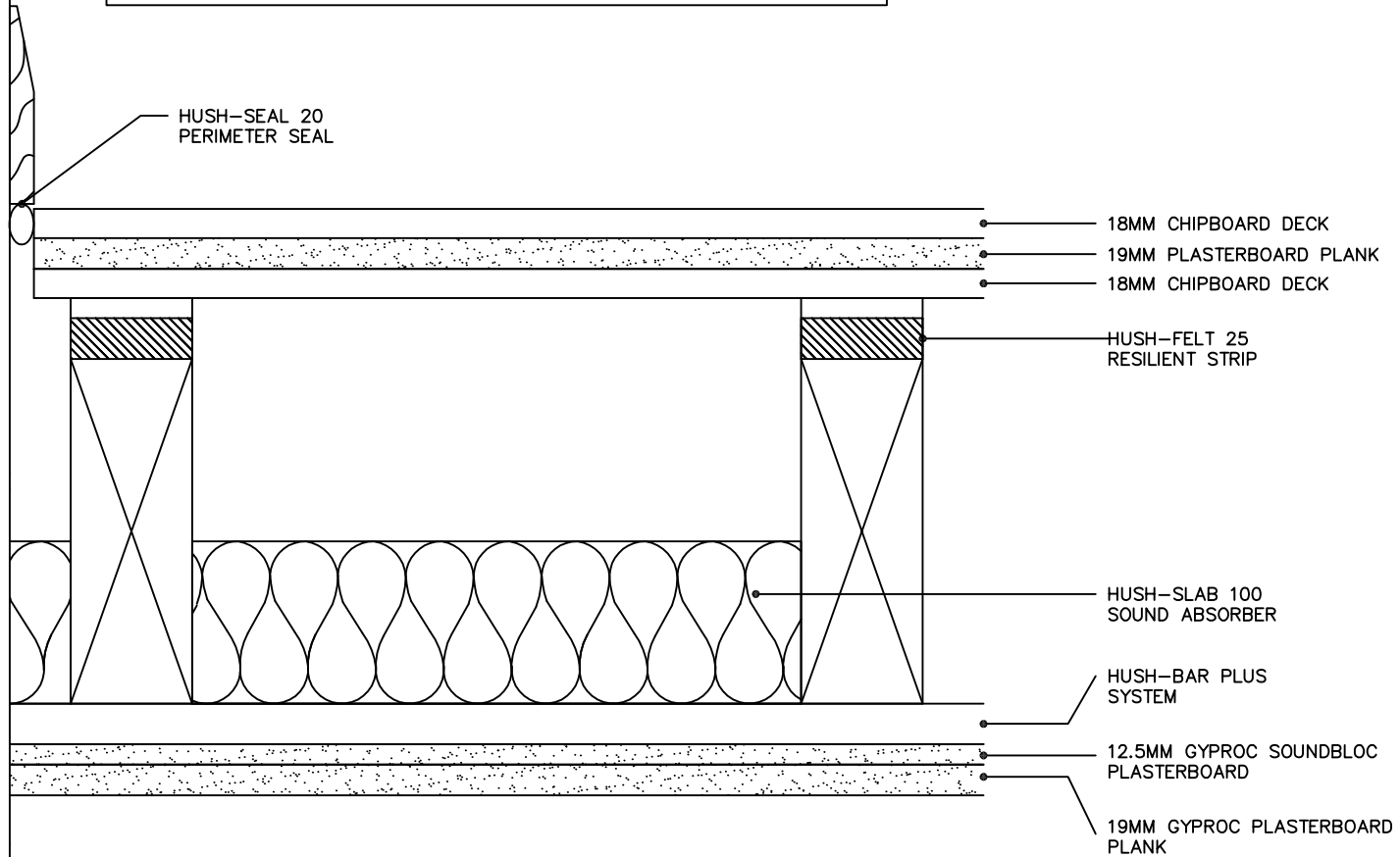


TYPICAL TEST RESULT

IMPACT $L_nTW = 50dB$ AIRBORNE $D_nTW = 58dBB$ $D_nTW + CTR = 52dB$
RESULTS BASED ON 250MM JOISTS AT 450MM CENTRES

HUSH-FELT 25 RESILIENT STRIP STAPLED TO THE JOIST TOPS, WITH 18MM CHIPBOARD GLUED ABOVE. 19MM PLASTERBOARD PLANK OVERLAID WITH A FURTHER LAYER OF 18MM CHIPBOARD ABOVE, WITH ALL PERIMETERS SEALED USING HUSH-SEAL 20. (FIXED AS PER MANUFACTURERS INSTRUCTIONS).
HUSH-SLAB 100 FITTED BETWEEN JOISTS, THEN HUSH-BAR PLUS SYSTEM SCREW FIXED TO THE UNDERSIDE OF JOISTS AT 450MM CENTRES ON TO WHICH IS SECURED TWO LAYERS OF HIGH DENSITY PLASTERBOARD, 19MM PLANK AND 12.5MM SOUNDBLOC. SEAL ALL PERIMETERS PRIOR TO SKIMMING. PROVIDES A 1 HOUR FIRE RESISTANCE AT CEILING LEVEL.



HUSH (UK) LTD
HUSH-SYSTEM HF25 ADV
TYPE HD1017