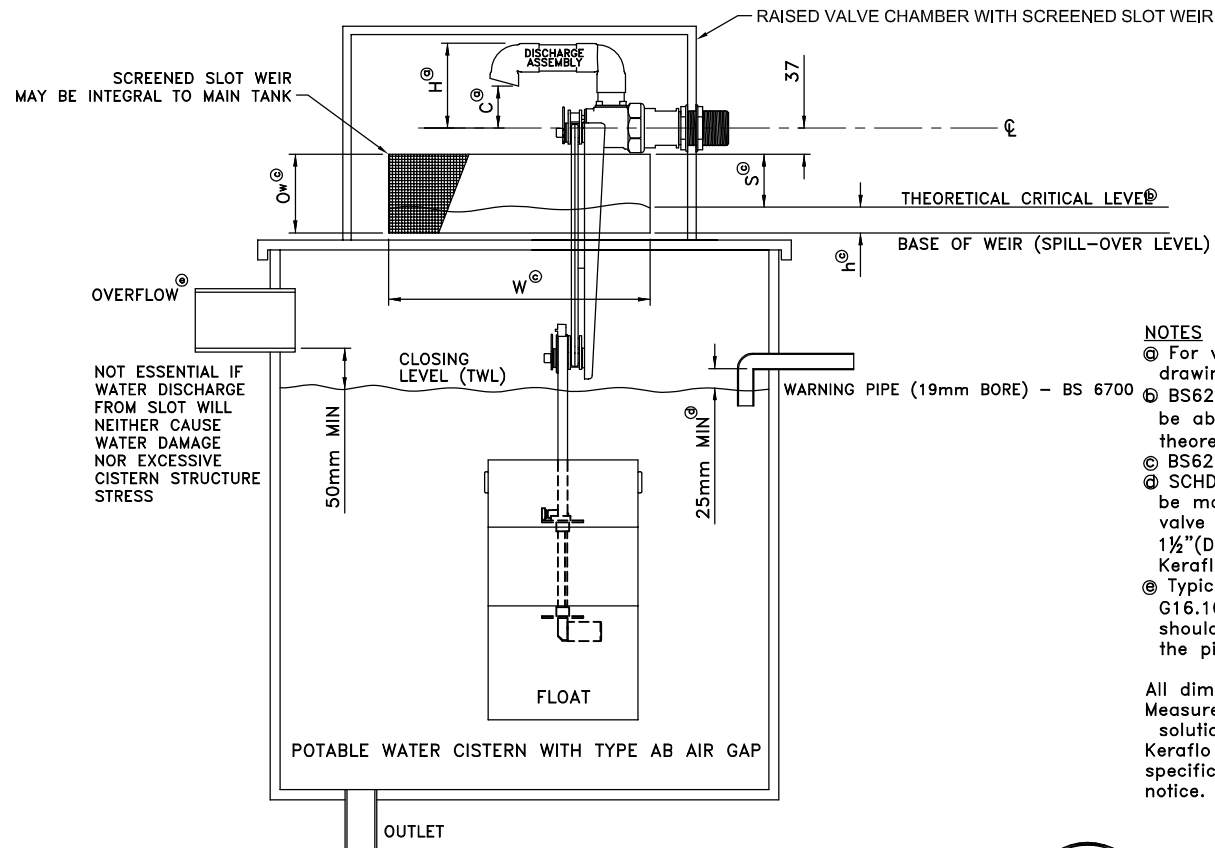


AYLESBURY KAX TYPE VALVE IN RAISED CHAMBER WITH SLOT WEIR AND TYPE AB AIR GAP



SCREENED SLOT WEIR
MAY BE INTEGRAL TO MAIN TANK

OVERFLOW[Ⓢ]

NOT ESSENTIAL IF
WATER DISCHARGE
FROM SLOT WILL
NEITHER CAUSE
WATER DAMAGE
NOR EXCESSIVE
CISTERN STRUCTURE
STRESS

CLOSING LEVEL (TWL)

FLOAT

POTABLE WATER CISTERN WITH TYPE AB AIR GAP

OUTLET

RAISED VALVE CHAMBER WITH SCREENED SLOT WEIR

DISCHARGE ASSEMBLY

THEORETICAL CRITICAL LEVEL[Ⓢ]

BASE OF WEIR (SPILL-OVER LEVEL)

WARNING PIPE (19mm BORE) - BS 6700

NOTES

- Ⓢ For valve dimensions & water levels refer to drawings Ki070* & Ki071*
- Ⓢ BS6281 Part 1, Lowest part of valve (nut) must be above maximum water level (2 seconds before theoretical critical level)
- Ⓢ BS6281 Part 1
- Ⓢ SCHED 2, SECT 7, G16.5 Water Regs. Gap should be more if water is turbulent - especially if near valve discharge. 40mm minimum for valves 1½" (DN 40mm) or larger - recommended by Keraflo.
- Ⓢ Typically twice inlet bore. SCHED 2, SECT 7, G16.10 Water Regs.- warning/overflow pipe(s) should be capable of taking any possible flow in the pipe arising from inlet valve failure.

All dimensions in mm unless stated.
Measurements are subject to specific gravity of solution.
Keraflo Ltd reserve the right to change specifications, design and materials without prior notice.

Ki074C
10/12/07



KERAFLO LTD
UNIT 1 WOODLEY PARK EST.
59-69 READING ROAD
WOODLEY, READING
BERKSHIRE, RG5 3AN, UK
TEL: +44 (0)118 921 9920
FAX: +44 (0)118 921 9921
e-mail: info@keraflo.co.uk
web site: www.keraflo.co.uk