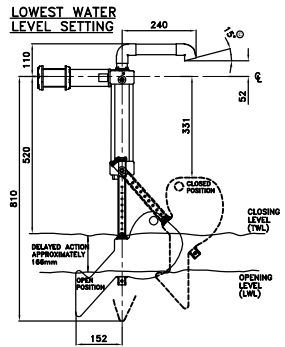
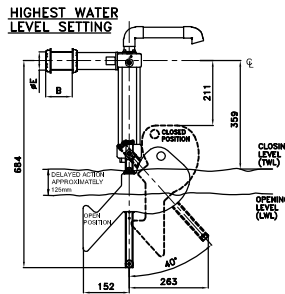
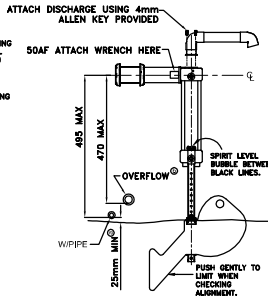


**AYLESBURY KAX TYPE
DIMENSIONS – SIDE VIEW
SIZES (DN): 2”(50)HF, 2½”(65)SF, 3”(80)RB**



WARNING
The float arm must be fitted absolutely vertical (in the open position) as indicated by the spirit level. Misalignment will prevent the valve from closing.
Ensure overflowing level is not lower than 495mm; and higher for higher water levels
Level differential 125 – 166mm non adjustable delayed action.



DN	50HF	65SF	80RB
SIZE	2"NF	2½"SF	3"RB
W	95	100	99
H	60	75.5	85

NOTES
 © SCHD 2, SECT 7, G16.5 Water Regs. Gap should be more if water is turbulent – especially if near valve discharge. 40mm minimum for valves ½”(DN 40mm) or larger – recommended by Keraflo.
 © Typically twice inlet bore. SCHD 2, SECT 7, G16.10 Water Regs. – warning/overflow pipe(s) should be capable of taking any possible flow in the pipe arising from inlet valve failure.
 © 15° discharge standard on 2”NF to 3”RB (DN 50HF to 80RB), 45° discharge cost option available (further reduces stagnation)

See K1087* for front view
 All dimensions in mm unless stated.
 Measurements are subject to specific gravity of solution.
 Keraflo Ltd reserve the right to change specifications, design and materials without prior notice.



KERAFLO LTD
 UNIT 1 WOODLEY PARK EST.
 58-59 READING ROAD
 WOODLEY READING
 BERKSHIRE RG5 3AN UK
 TEL: +44 (0)118 921 9920
 FAX: +44 (0)118 921 9921
 e-mail: info@keraflo.co.uk
 web site: www.keraflo.co.uk

K1086B
 04/12/07