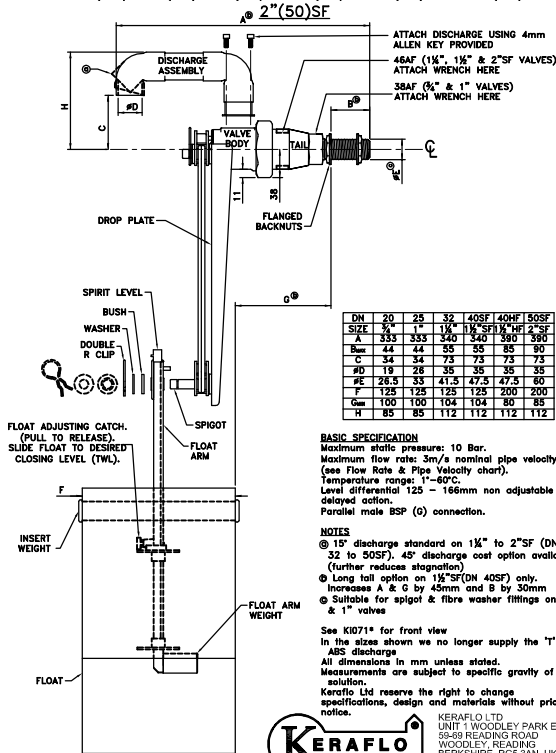


**AYLESBURY KAX TYPE
DIMENSIONS - SIDE VIEW**
SIZES (DN): 3/4"(20), 1"(25), 1 1/4"(32), 1 1/2"(40)SF, 1 1/2"(40)HF, 2"(50)SF



BASIC SPECIFICATION
Maximum static pressure: 10 Bar.
Maximum flow rate: 3m³/a nominal pipe velocity (see Flow Rate & Pipe Velocity chart).
Temperature range: -1°-60°C.
Level differential: 125 - 166mm non adjustable delayed action.
Parallel male BSP (G) connection.

NOTES
① 1" discharge standard on 1 1/4" to 2"SF (DN 32 to 50SF). 4" discharge cost option available (further reduces stagnation)
② Long fall option on 1 1/2"SF (DN 40SF) only. Increases A & G by 45mm and 9 by 50mm
③ Suitable for spigot & fibre washer fittings on 1 1/2" & 1" valves

See KI071* for front view
In the sizes shown we no longer supply the "T" ABS discharge
All dimensions in mm unless stated.
Measurements are subject to specific gravity of solution.

Keraflo Ltd reserve the right to change specifications, design and materials without prior notice.



KI070D
28/11/07