

**KEY**

**LINTEL HEIGHTS**

A = 140MM  
B = 215MM  
C = 290MM

**LINTEL DEPTHS**

D = 100MM  
E = 120MM

140MM AND 150MM DEPTHS ALSO AVAILABLE

**NOTE;**  
SPLAYED LINTELS INCORPORATE AN 80MM SPLAY TO EACH END

**STRUCTURAL OPENING SIZES AVAILABLE INCLUDE:**  
488MM, 630MM, 915MM, 1200MM, 1770MM

**NON-STANDARD LENGTHS MANUFACTURED TO ORDER**

**IMPORTANT NOTICE: SEMI-DRY CAST LINTELS ARE NON LOAD BEARING AND SHOULD BE USED IN CONJUNCTION WITH A SUITABLE STRUCTURAL LINTEL AS PER ENGINEER OR MANUFACTURERS RECOMMENDATIONS**

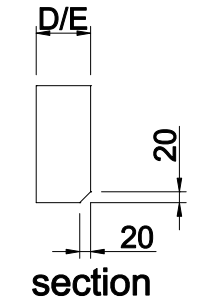
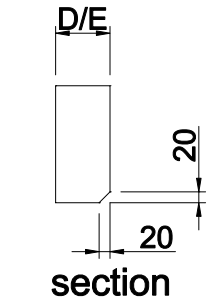
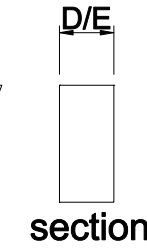
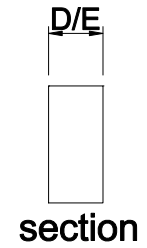
**TYPICAL WEIGHTS**

140MM X 100MM - APPROX 30KG PER LM  
215MM X 100MM - APPROX 46KG PER LM  
290MM X 100MM - APPROX 69KG PER LM

140MM X 120MM - APPROX 36KG PER LM  
215MM X 120MM - APPROX 55KG PER LM  
290MM X 120MM - APPROX 75KG PER LM

**UNITS CAN BE SUPPLIED WITH CAST IN LIFTING SOCKETS IF SPECIFIED**

**UNITS EXCEEDING SLENDERNESS RATIO WILL BE SUPPLIED SECTIONAL (PLEASE CONSULT SALES TEAM)**



# PROCTER CAST STONE HEADS